

GAS FRYER

Instruction Manual

Model #5099NS



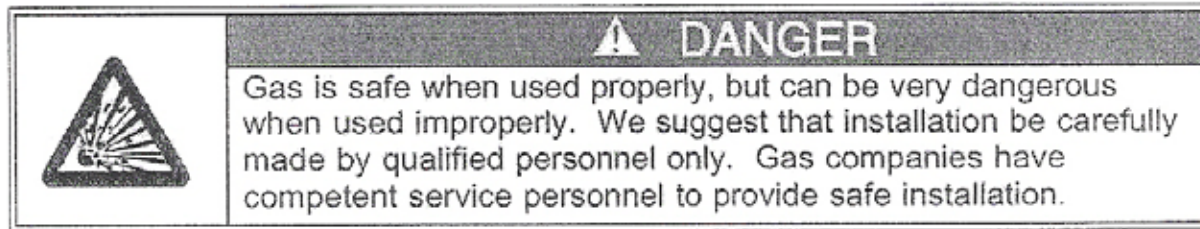
 **GOLD MEDAL®**
FUNFOOD EQUIPMENT & SUPPLIES



513-521-6500
9832 Hamilton Ave. Cincinnati, OH 45231

ALTITUDE RANGE:

The factory has sized the orifices for elevations up to 2000 feet above sea level. For high altitude applications, please contact Gold Medal customer service.



NOTE:

This fryer must be attached to a 100 pound LP cylinder.

This fryer will not operate properly on small (20-40 lb.) cylinders.

GAS PRESSURE

We have determined that optimum frying occurs when the gas pressure is adequate. For propane gas, we recommend a manifold pressure setting of 11 inches of water column.

The pressure is measured at the appliance when the main burner is ignited.

LIGHTING AND SHUT DOWN INSTRUCTIONS

Follow these steps to light your unit:

1. Turn the gas safety valve to the "PILOT" position.
2. Depress the button next to the safety valve handle.
3. Light the pilot burner with a household match. Continue to hold the safety valve button for approximately 30 -45 seconds. Release the safety valve button and the pilot burner will remain lit.
4. Turn the gas safety valve handle to the "ON" position. The main burner will ignite.
5. To extinguish both the pilot and the main burner flames, lift the lock button on the gas safety valve and turn the safety valve handle to the "OFF" position.
6. Should the burner become extinguished because of the high-limit tripping, shut off the gas supply until the fryer cools down, then re-ignite.

If the pilot is turned off, a 5 minute shutdown period is required before relighting.

FILLING THE OIL TANK

The tank will hold 50 lbs. of cooking oil. The surface on this amount of oil will be approximately 2 ³/₄ inches above the bottom of the tank.

NOTE:

Cooking oil expands upon heating. Do not overfill the tank as overfilling could result in a dangerous situation.

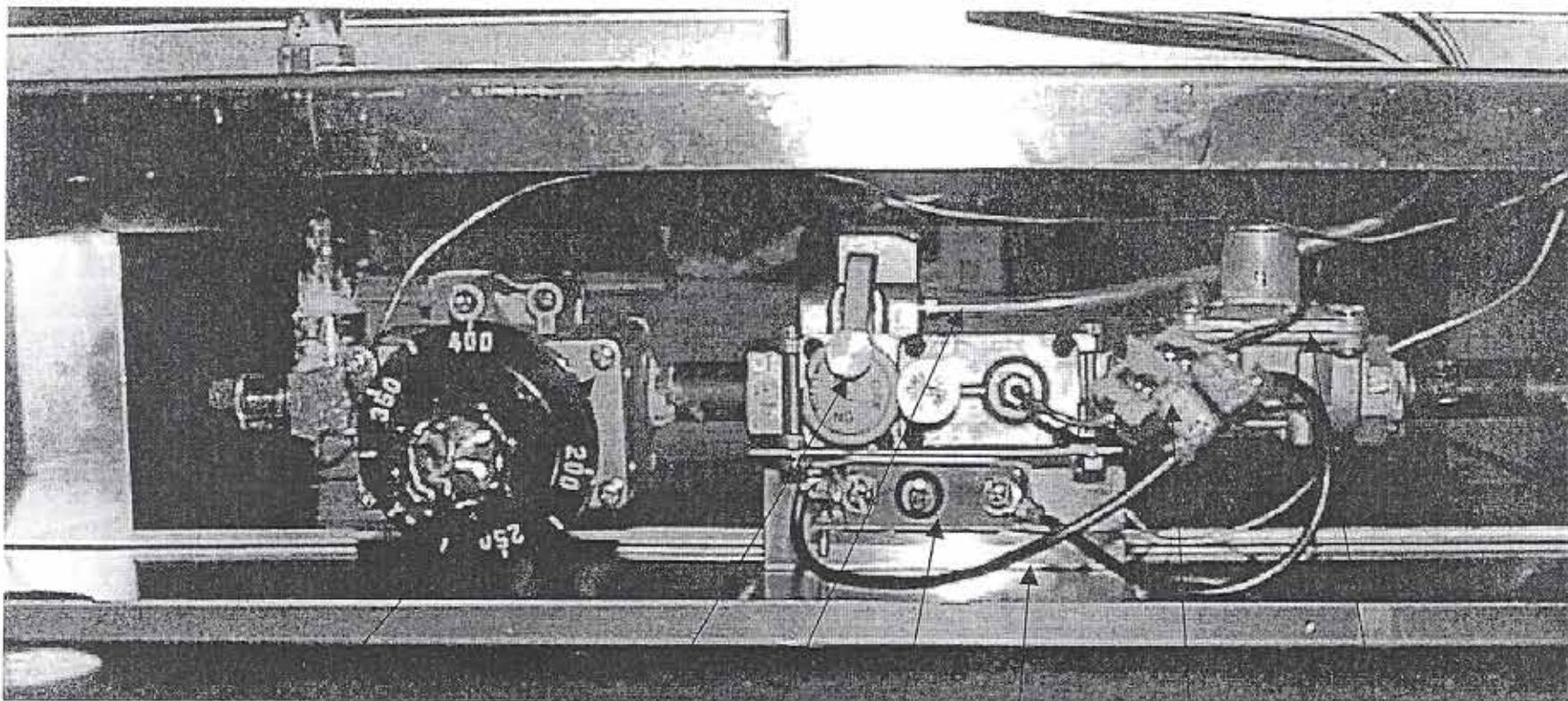


513-521-6500

9832 Hamilton Ave. Cincinnati, OH 45231

MODEL #5099NS

GAS FUNNEL CAKE FRYER



Control Valve
P/N/ 89679

Safety Valve
74027

Aluminum Tube
P/N 74561

High Limit Control
P/N 89615

Wire Assy.
P/N 89767

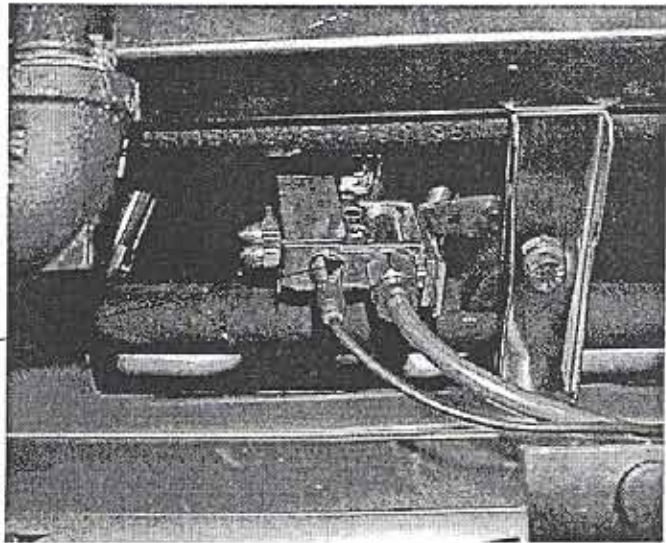
Thermocouple
P/N 89762

11 in. w.c. regulator
P/N 89916

Not Shown:

89166	Burner with Tips
89920	Regulator with 5 foot hose
4300	Dial Thermometer
8055	Fine Mesh Skimmer
89014	Tank Drain Valve

Pilot Burner Assy.
P/N 74032
Bracket - 89754



513-521-6500
9832 Hamilton Ave. Cincinnati, OH 45231

MODEL #5099NS